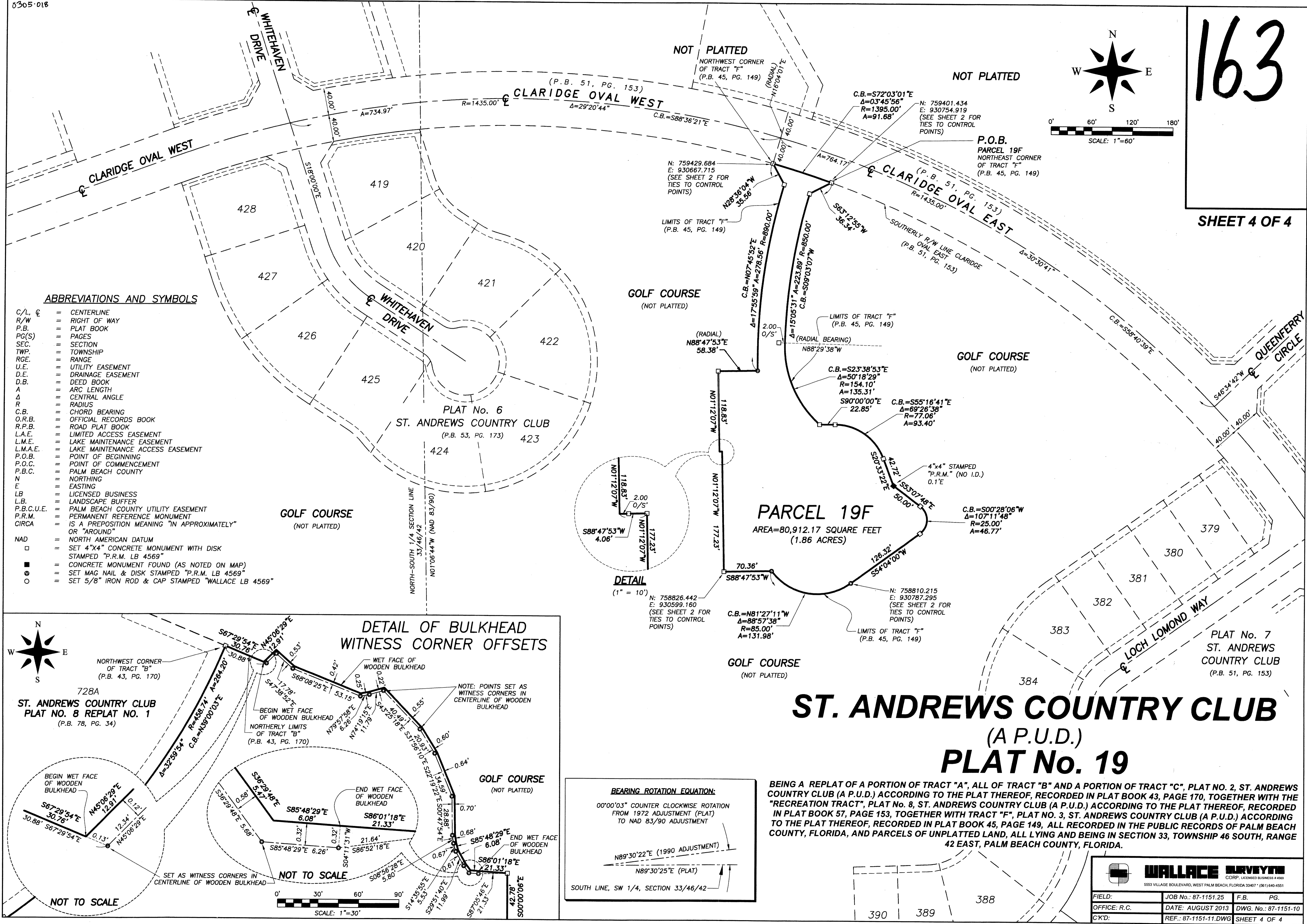
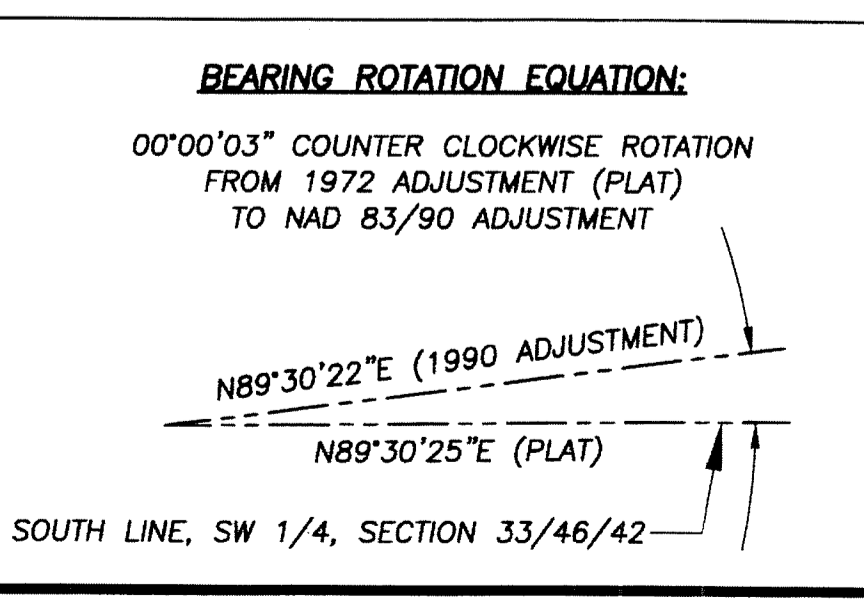
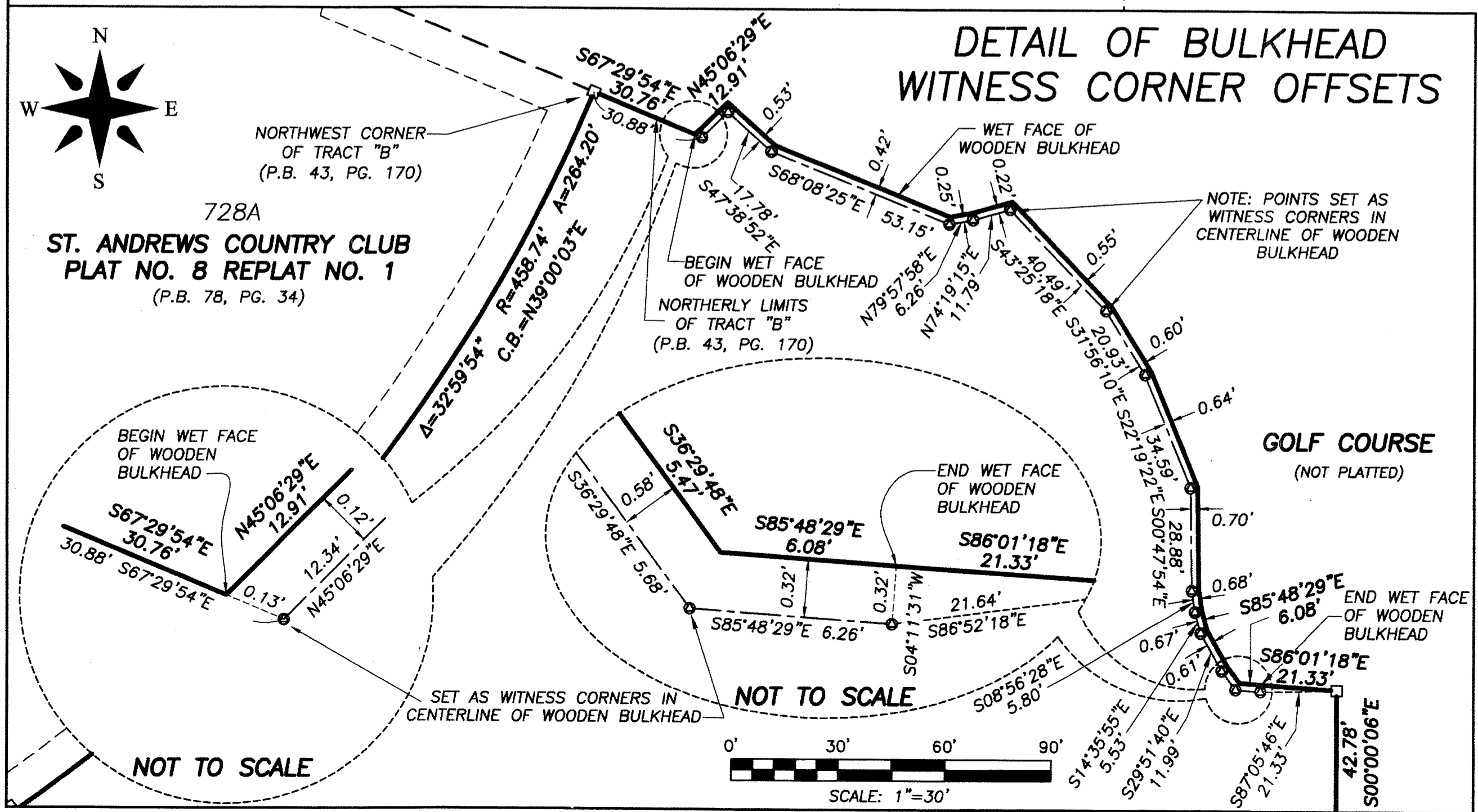


- ABBREVIATIONS AND SYMBOLS**
- C/L, ☉ = CENTERLINE
 - R/W = RIGHT OF WAY
 - P.B. = PLAT BOOK
 - PG(S) = PAGES
 - SEC. = SECTION
 - TWP. = TOWNSHIP
 - RGE. = RANGE
 - U.E. = UTILITY EASEMENT
 - D.E. = DRAINAGE EASEMENT
 - D.B. = DEED BOOK
 - A = ARC LENGTH
 - Δ = CENTRAL ANGLE
 - R = RADIUS
 - C.B. = CHORD BEARING
 - O.R.B. = OFFICIAL RECORDS BOOK
 - R.P.B. = ROAD PLAT BOOK
 - L.A.E. = LIMITED ACCESS EASEMENT
 - L.M.E. = LAKE MAINTENANCE EASEMENT
 - L.M.A.E. = LAKE MAINTENANCE ACCESS EASEMENT
 - P.O.B. = POINT OF BEGINNING
 - P.O.C. = POINT OF COMMENCEMENT
 - P.B.C. = PALM BEACH COUNTY
 - N = NORTHING
 - E = EASTING
 - LB = LICENSED BUSINESS
 - L.B. = LANDSCAPE BUFFER
 - P.B.C.U.E. = PALM BEACH COUNTY UTILITY EASEMENT
 - P.R.M. = PERMANENT REFERENCE MONUMENT
 - CIRCA = IS A PREPOSITION MEANING "IN APPROXIMATELY" OR "AROUND"
 - NAD = NORTH AMERICAN DATUM
 - ☐ = SET 4"x4" CONCRETE MONUMENT WITH DISK STAMPED "P.R.M. LB 4569"
 - = CONCRETE MONUMENT FOUND (AS NOTED ON MAP)
 - = SET MAG NAIL & DISK STAMPED "P.R.M. LB 4569"
 - ◊ = SET 5/8" IRON ROD & CAP STAMPED "WALLACE LB 4569"



WALLACE SURVEYS CORP. LICENSED BUSINESS # 4569 5553 VILLAGE BOULEVARD, WEST PALM BEACH, FLORIDA 33407 • (561) 640-4551		
FIELD:	JOB No.: 87-1151.25	F.B. PG.
OFFICE: R.C.	DATE: AUGUST 2013	DWG. No.: 87-1151-10
C/K'D:	REF.: 87-1151-11.DWG	SHEET 4 OF 4